

Mobile Access Setup

Document Prepared By :Gaurav Jagtap

Date Created :21/02/2017

Version No : 1.0

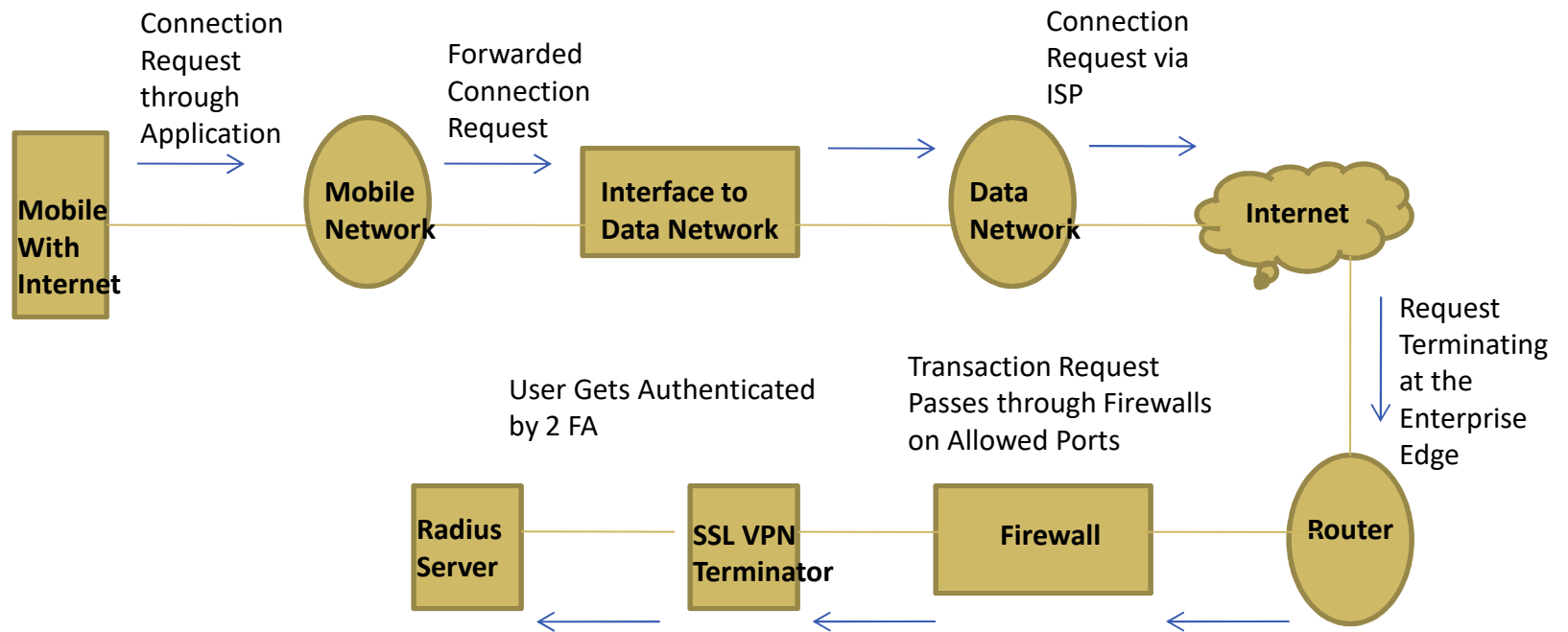
Need of Secure Mobile Access

- As most of the users have Smart Mobile Devices. It is proposed to provide them with the access to Payment Options.
- As Smart Mobile Devices are also prone to unauthorized activities it is proposed to consider security option while designing the solution.

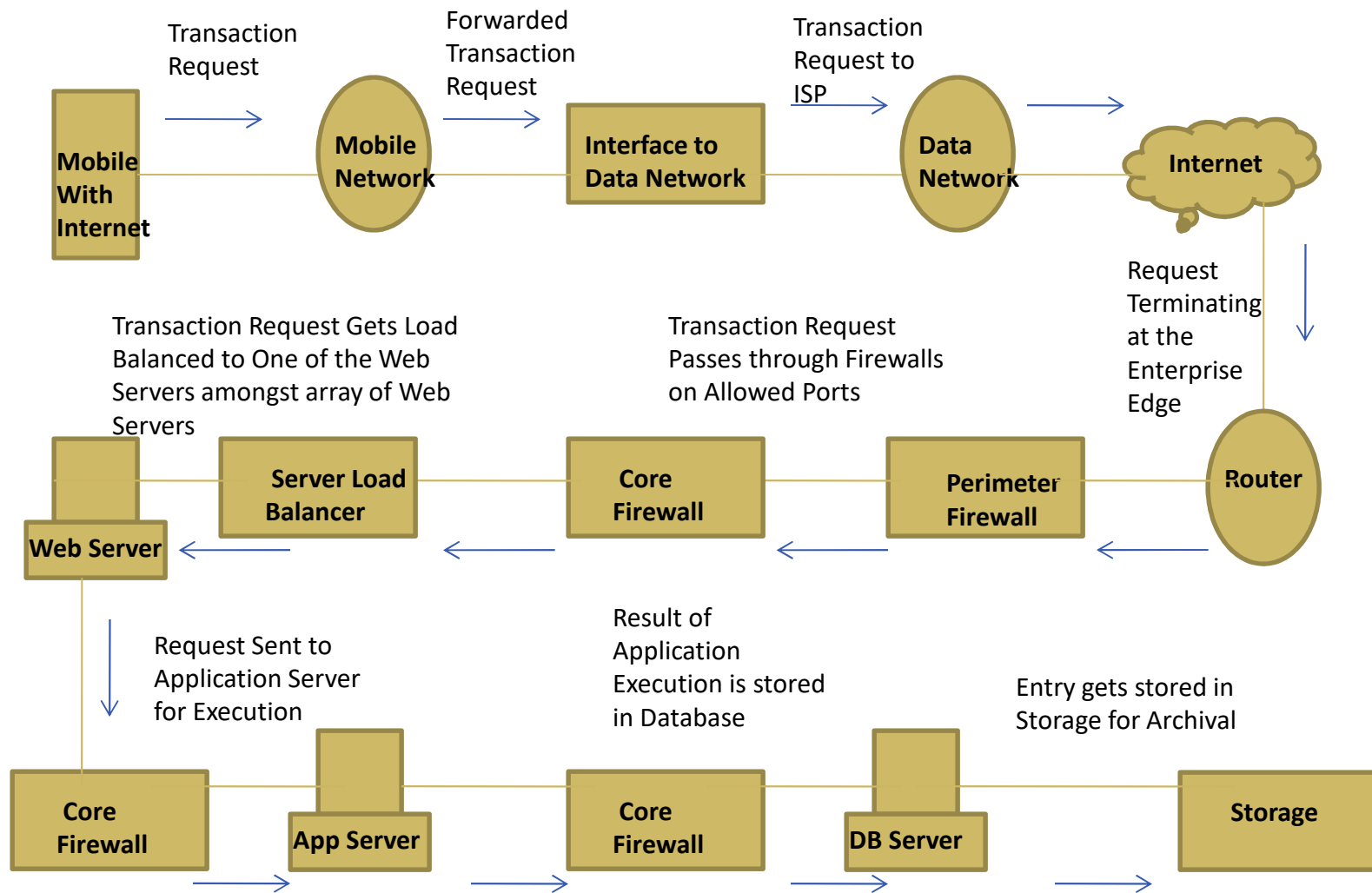
Road Map

- Mobile Users may be categorized into two types
 1. Smart Phone Users
 2. Normal Phone Users
- Transaction Options
 1. SMS Transaction
 2. Transaction via Mobile Application

Logical Connection from Mobile using Application

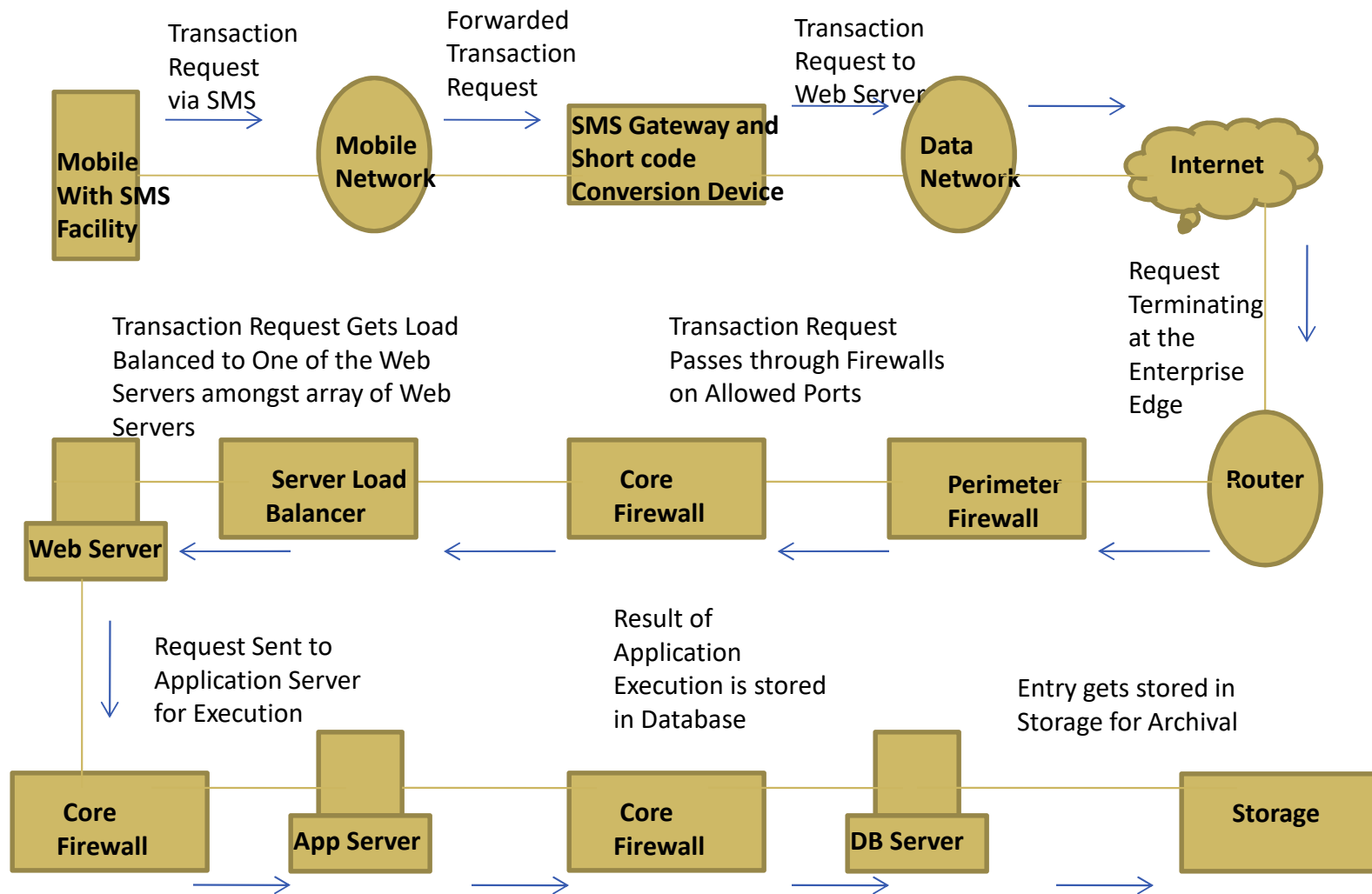


STEP 1 – User Connects to SSL VPN using Mobile Application or Browser



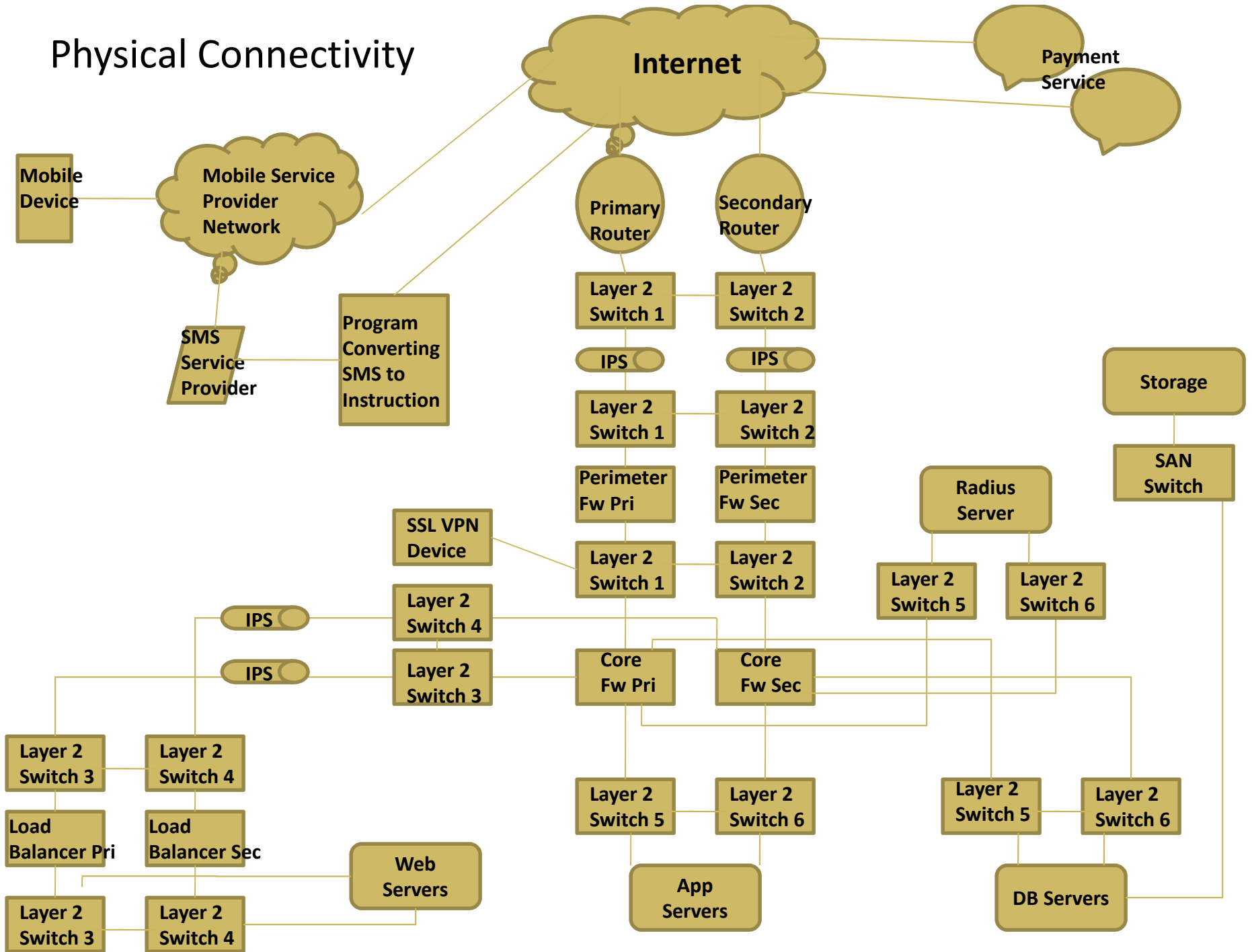
STEP 2 – User Access Application over SSL VPN to do the transaction

Logical Connection from Mobile using SMS



STEP 1 – User does the transaction via SMS

Physical Connectivity



Configuration Details

Type	VLAN IDs	IP Address
Router WAN End	X	Public IP 1 Service Provider 1 Public IP 2 Service Provider 2
Segment Between Router LAN and IPS	2000	192.168.1.0/24
Segment Between IPS and Perimeter Firewall	2001	192.168.1.0/24
Segment Between Perimeter Firewall and Core Firewall	2002	192.168.2.0/24
Segment Between Core Firewall and IPS	2003	192.168.3.0/24
Segment Between IPS and Load Balancer	2004	192.168.3.0/24
Web Server	2005	192.168.4.0/24
App Server	2006	192.168.5.0/24
DB Server	2007	192.168.6.0/24
Infra Server Segment (Exa. Radius Server)	2008	192.168.7.0/24

Inventory

Asset	Numbers
Routers	2
Firewalls	4
Layer 2 Switches	6
SAN Switches	2
Load Balancer	2
IPS	2
Servers	As Required
Storage	1
SSL VPN Box	1

Additional Facts

- The setup is considering all the devices in full redundancy
- The setup is considering SMS Service as a hosted setup at service providers location.
- The setup is considering name resolution is at service providers.
- Natting of Web Server Virtual IP with Public IP will be done at Core Firewall.

Thank You